

# Mississippi Gulf Fishing Banks, Inc.

## Activity Report for the Period August 14 - September 11, 2014

### Activity Summary

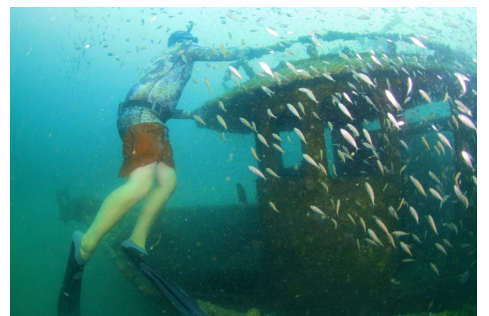
During this period there were two reef monitoring trips. On August 31, 2014, a trip was made to FH-2 and monitoring was performed on the St. Elmo, the Marguerite Culverts, and the Captain Kevin. On September 6, a visit was made to the Capt Le, a 74' Steel Hull Shrimp Boat that was rammed by the 130' supply boat Gloria May and sunk within the boundaries of FH-13. After that venture, an update check was made on FAD1 and then an effort was made to locate the NASA BRT which appears to be heavily damaged. Finally a monitoring dive was made on the Mike Jenner Reef.

### 081011b St. Elmo Shrimp Boat 491F2

**30°04.820'N / 88°33.278'W** Gallery: [http://gallery.primofish.com/2014/Fishing\\_Diving/MGFB/140831\\_FH2\\_StElmo\\_MCulv\\_CaptKev\\_Luke\\_Joe-Rivera/St.Elmo/](http://gallery.primofish.com/2014/Fishing_Diving/MGFB/140831_FH2_StElmo_MCulv_CaptKev_Luke_Joe-Rivera/St.Elmo/)

This 70' Steel Hull Shrimp Boat washed ashore in Pass Christian Harbor during Hurricane Gustav in 2008. The Harbor had a lien on the Vessel and somehow obtained ownership and donated it to the DMR. The DMR Derelict Vessel Program paid 100% to recover the Vessel, environmentally clean it, and [deploy it in FH-2](#). Previous visits were conducted on [May 2, 2009](#), [September 20, 2009](#), [May 22, 2010](#), [July 14, 2012](#), [September 12, 2012](#), and [September 29, 2013](#). Noted was an increase in the Triggerfish population, a few juvenile Amberjack showing up, healthy baitfish schools, a pair of spotfin butterflies, and cocoa damsels. Water clearance was measured at 50 feet, the bow pulpit at 58 feet, top of wheel house stern port at 55 feet, stern starboard corner top at 58 feet, stern starboard bottom hole at 65 feet.

Video: <http://youtu.be/gJZTLCO2vqE>

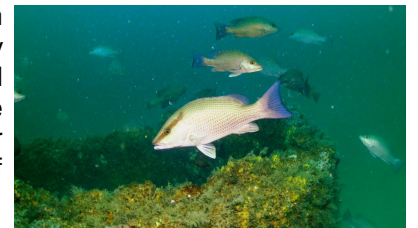


### 090930 Marguerite Culverts 508F2

**30°05.041'N 88°33.432'W** Gallery: [http://gallery.primofish.com/2014/Fishing\\_Diving/MGFB/140831\\_FH2\\_StElmo\\_MCulv\\_CaptKev\\_Luke\\_Joe-Rivera/Marguerite\\_Culverts/](http://gallery.primofish.com/2014/Fishing_Diving/MGFB/140831_FH2_StElmo_MCulv_CaptKev_Luke_Joe-Rivera/Marguerite_Culverts/)

These Culverts were deployed just Northeast of the old Marguerite Barge in FH-2 on September 30, 2009. A previous visit was made on [August 25, 2013](#). Noted was a healthy population of red snapper, triggerfish, mangrove snapper, scamp grouper, and several juvenile amberjack. On both visits there was a school of tiny baitfish within the circumference of a vertically sitting culvert. Sea urchins were sighted denoting better water quality. Butterflies, cocoa damsels, and soft corals were also common throughout the reef and a medium sized horse conch was seen transiting a piece of rubble.

Video: [http://youtu.be/nBxZe\\_1xnAI](http://youtu.be/nBxZe_1xnAI)



### 060424 Capt Kevin, 433F2

**30°05.099'N / 88°33.490'W** Gallery: [http://gallery.primofish.com/2014/Fishing\\_Diving/MGFB/140831\\_FH2\\_StElmo\\_MCulv\\_CaptKev\\_Luke\\_Joe-Rivera/CaptKev/](http://gallery.primofish.com/2014/Fishing_Diving/MGFB/140831_FH2_StElmo_MCulv_CaptKev_Luke_Joe-Rivera/CaptKev/)

This 48' Shrimp Boat was deployed in FH-2 on April 24, 2006. Previous visits were made on [March 18, 2007](#), [May 18, 2008](#), [September 20, 2009](#), [July 14, 2012](#), and [September 25, 2013](#). Noted was a larger population of mangrove snapper inhabiting the interior of the vessel. The same small baitfish noted on the culverts were present here and seem to cling close to the structure. Water clearance was measured at 34 feet on protruding mast metal, 36 and 38 feet on the next horizontals of this same mast. Authorized clearance is 30 feet.

Video: <http://youtu.be/fAGeGpwGkiQ>



### 140825 Capt Le, 549F13 Depth 69'

**30°02.914'N / 88°31.224'W** Gallery: [http://gallery.primofish.com/2014/Fishing\\_Diving/MGFB/140906\\_Capt-Le\\_MJ\\_FAD/Capt\\_Le/](http://gallery.primofish.com/2014/Fishing_Diving/MGFB/140906_Capt-Le_MJ_FAD/Capt_Le/)

From [news reports](#), it appears that the 130' Supply Boat "Gloria May" collided with the 74' Shrimp Boat "Capt Le" on Sunday, August 24, at around 10:40 pm about 18 miles south of Pascagoula. The Gloria May was not damaged badly and returned to port. The Capt Le sank within MGFB's FH-13 site at the above coordinates. After finding out about the incident on September 6, a trip was made to assess the situation. The vessel landed bow down into the mud with only about 12 feet of water clearance. There was a strong smell of diesel but no visible signs of oil or fuel leakage. A large rope was drifting along the surface and there was a ball buoy marking the site. Nets, ropes, and loose

Video: <http://youtu.be/eEeDuBgccHY>



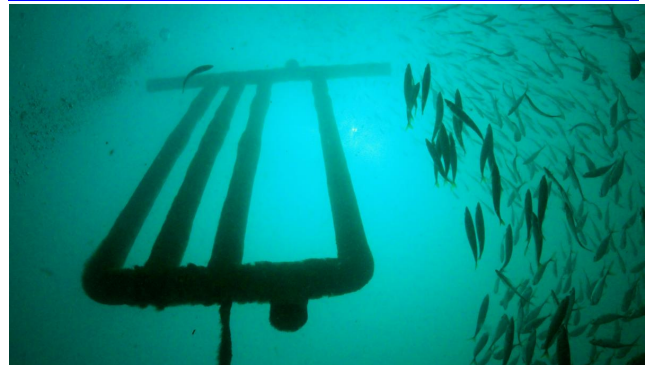
items were also seen littering the wreck. The current indication is that the owner did not have insurance and that the Coast Guard was taking over recovery using federal pollution funds. A contractor was selected and subcontracted the work to Bosarge Diving to recover fuel and oil and to get the vessel in compliance with the permitted reef height of 50 feet. MGFB has contacted the Corps of Engineers about the possibility of raising the height requirement to a level that coincides with the nearby Pascagoula Ship Channel clearance of 42 feet.

## 140810 FAD1 Visit

**Video:** <http://youtu.be/oVfVYZ-L7E>

**Gallery:** [http://gallery.primofish.com/2014/Fishing\\_Diving/MGFB/140906\\_Capt-Le\\_MJ\\_FAD/FAD/](http://gallery.primofish.com/2014/Fishing_Diving/MGFB/140906_Capt-Le_MJ_FAD/FAD/)

Deployed on [August 10](#), this new test FAD (Fish Attraction Device) was created using 10 foot sticks of sewer pipe. It was also previously visited on [August 23](#). It is proving to doing very well at attracting baitfish and algae growth and a few small barnacles are starting to form on the surface. Most of the snapper and gamefish are staying near the bottom at the pyramids, but the other pyramids in the area do not have the quantity of baitfish seen here. Also worth noting, there was a single arrow crab sighted on the August 23 visit that managed to climb up the rope to the FAD. On this visit there were no arrow crabs on the FAD itself, but down on the rope at the top of the pyramid were several arrow crabs (5-7) that setup residency.



## 111026 NASA BRT 545F13

**Position:** 30°00.442'N / 88°31.424'W 85' Depth

NASA Employee Bryon Maynard and his crew of 5 orchestrated the deployment of the BRT (Big Round Thing) in FH-13. The BRT was a Hydrogen Accumulator Tank (HAT) that was used in the testing of the Saturn V Engines at NASA's Stennis Space Center. It was deployed in the Southwest End of FH-13 in 85 feet of water on [October 26, 2011](#). Previous visits were made on [February 4, 2012](#) and [July 16, 2012](#). Unfortunately on this trip it appears that the structure has been severely damaged, possibly struck by a large vessel. The initial dive was to tie a marker on it and to take followup video but the visibility was very poor within the last 10 feet of the water column and it appears there is only some fragments left with some splits observed in the shell. The marker was tied although poorly since an adequate tie point was not found. The last visit recorded a water clearance of 52 feet and it is now closer to 83 feet. A future visit with better visibility on the bottom is needed to attempt a better assessment of what has happened to this reef.



## 060624 Mike Jenner Reef 435F13

**Position:** 29°59.527'N / 88°29.610'W 87'

**Gallery:** [http://gallery.primofish.com/2014/Fishing\\_Diving/MGFB/140906\\_Capt-Le\\_MJ\\_FAD/Mike\\_Jenner\\_Reef/](http://gallery.primofish.com/2014/Fishing_Diving/MGFB/140906_Capt-Le_MJ_FAD/Mike_Jenner_Reef/)

This 145' River Tug Boat is sitting upright in about 86' of water within FH-13. Deployed post Hurricane Katrina, this vessel offers the highest relief in FH-13 at about 52 feet of water clearance. Noted was a Spanish Hogfish, typically a deepwater tropical fish, is the first one observed on MGFB reefs. A couple Blue Angels were sighted as well as juvenile amberjack and healthy schools of small mangrove snapper. Red Snapper populations were weak which may indicate some commercial pressure. Several triggerfish and game sized grouper were also observed, as were large schools of baitfish. The presence of sea urchins denote some better water quality. A "message-in-a-bottle" was also found near the starboard bow and an unknown statue which later were determined to have been placed by Robert Homes of Long Beach, MS. The items were left for a future diver to find.

