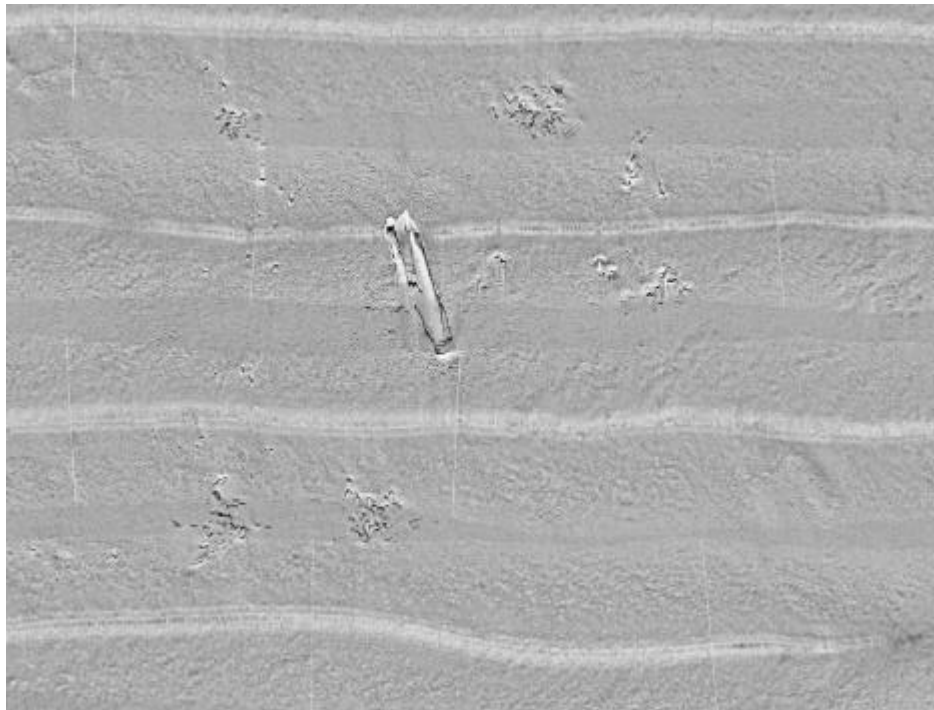


**Mississippi Department of Marine Resources
and Mississippi Gulf Fishing Banks, Inc.
Deployment Report for the Period of
August 12, 2005 to June 8, 2006**

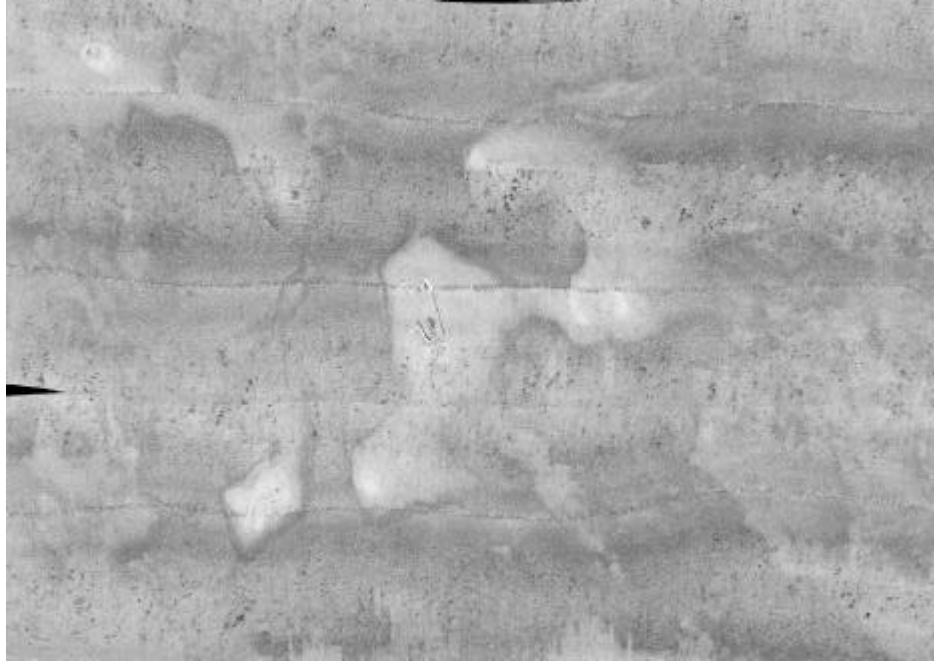
Summary

During this period there was one hurricane and 2 reef deployments. On August 29, 2005 Mississippi was hit by Hurricane Katrina. Hurricane Katrina was a powerful and deadly hurricane that carved a wide swath of catastrophic damage and inflicted large loss of life and property. It was the costliest and one of the five deadliest hurricanes to ever strike the United States. Katrina first caused fatalities and damage in southern Florida as a Category 1 hurricane on the Saffir-Simpson Hurricane Scale. After reaching Category 5 intensity over the central Gulf of Mexico, Katrina weakened to Category 3 before making landfall on the northern Gulf coast. Even so, the damage and loss of life inflicted by this massive hurricane in Louisiana and Mississippi were staggering; with significant effects extending into Alabama. Considering the scope of its impacts, Katrina was one of the most devastating natural disasters in United States history.

Katrina not only devastated the coast line it also wreaked havoc on the artificial reefs off of Mississippi. We estimate over 90% of the reef material have been negatively impacted. Many vessels were moved and scoured deep into the bottom. Areas where we side scanned showed most of the concrete rubble have disappeared as shown in the below figures.



Pre Katrina side scan image of rubble around NE barge in FH-2.



Same area but post Katrina side scan image of rubble around a barge in FH-2.

So far we have side scanned FH 1, 2, 3 and 6. The side scan data shows essentially the same scouring in all of these reef sites. As time allows we will complete surveys for all of the reef sites and update coordinates.

On April 24, 2006 two steel hull shrimp boats were deployed. One on FH-2 (Capt. Kevin) and the other (Jo Curtis-Mary Landry) on the north end of FH-13. These steel hull vessels were damaged and sunk in Back Bay of Biloxi by Hurricane Katrina. The U.S. Coast Guard had these two vessels floated, then transferred ownership to the Mississippi Dept. of Marine Resources for artificial reef material. The MDMR contracted Gulf Stream Enterprises, Inc. to clean and deploy these two vessels at no cost to MGFB.

On April 24, 2006 DMR met the vessel “Fair Maiden”, which had the two vessels Capt. Kevin and the Jo Curtis – Mary Landry vessels in tow.



060424 Capt. Kevin, 433 FH 2

Position: 30° 05.099'N / 88° 33.490'W

On April 24, 2006 DMR met the vessel "Fair Maiden" on location at 1:00 pm to deploy the 48' shrimp boat hull Capt. Kevin. The vessel was anchored and the seacock opened. The surrounding water depth was 56'. The hull sunk upright at 1:40 pm and has a clearance over the hull of approximately 30'.



060424 Jo Curtis – Mary Landry vessel, 434 FH 13

Position: 30° 03.459'N / 88° 32.189'W

After the Capt. Kevin sunk, the "Fair Maiden" towed Jo Curtis-Mary Landry on location at the north end of FH 13. This 70' steel hull vessel was put in position and sunk at 3:00 pm. The surrounding water depth is 66'. The hull sunk upright with a clearance over the hull of approximately 50'.

